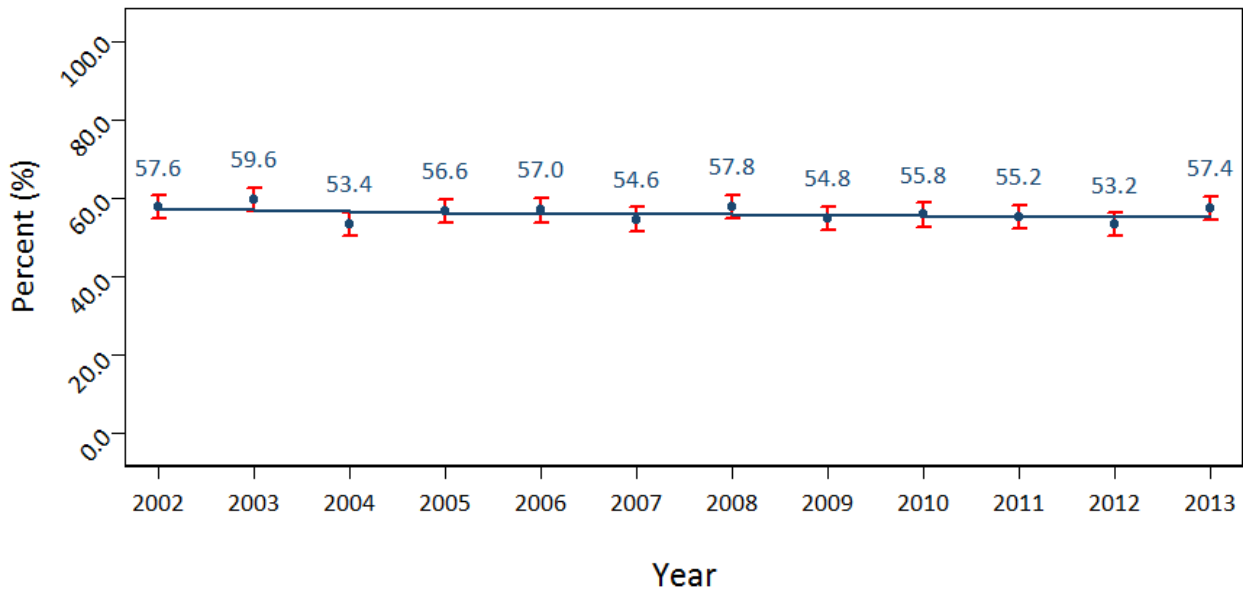


Proportion of adults (18+) who self-report very good or excellent health.

Percentage of adults (18+) who report their general health is excellent or very good, HKPR District, 2002 - 2013



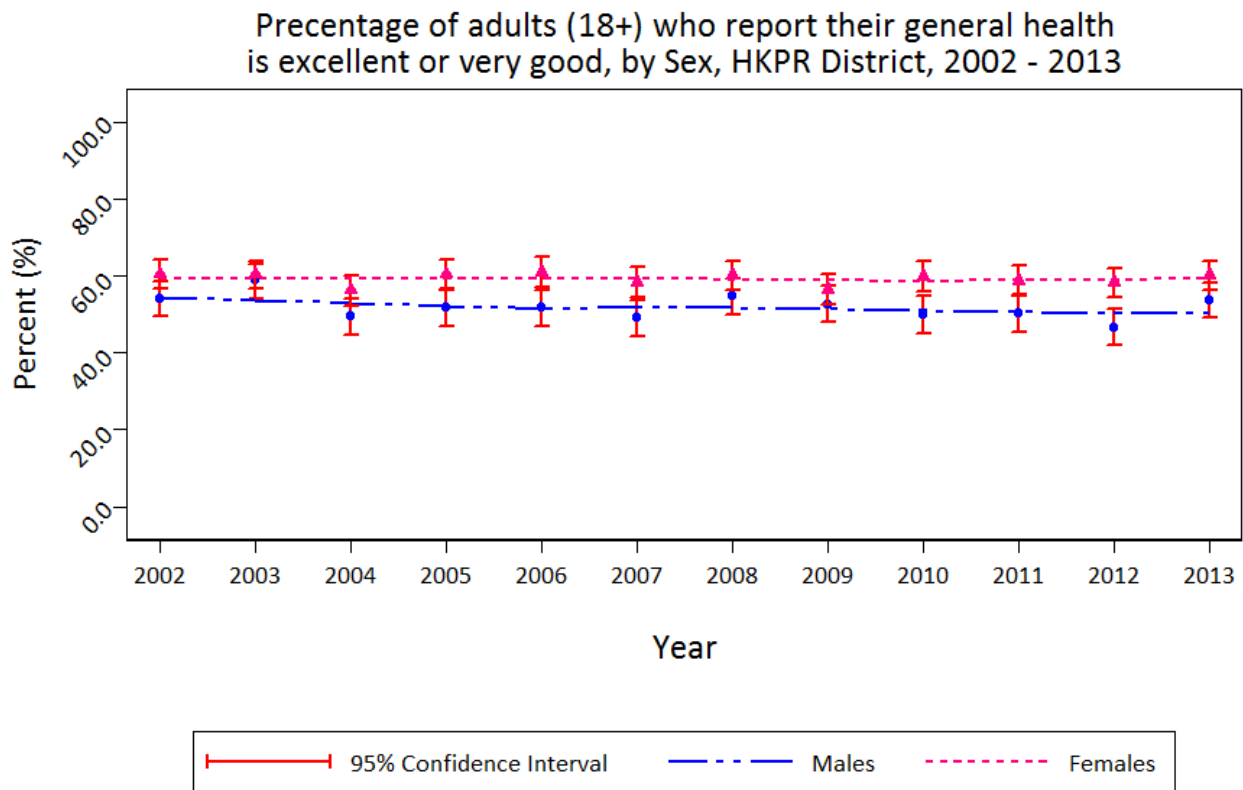
*High Variability; Interpret with caution
 **Data not released

Data Source: RRFSS (Jan-Dec, 2002 - 2013), HKPR District Health Unit and Institute for Social Research (ISR), York University.

Interpretation: Since 2002, the percentage of HKPR residents self-reporting very good or excellent health has remained relatively stable over the past eleven years, ranging from a high of 59.6 in 2003 to a low of 53.2 in 2012.

Data Note: Point estimates are marked on the graph with circles and are surrounded by 95% Confidence Intervals (95% CIs) which indicate the range of variability for an estimate. The trend line presented is the smoothed line of best fit through the annual point estimates for the entire time period.

Proportion of adults (18+) who self-report very good or excellent health, by sex



*High Variability; Interpret with caution

**Data not released

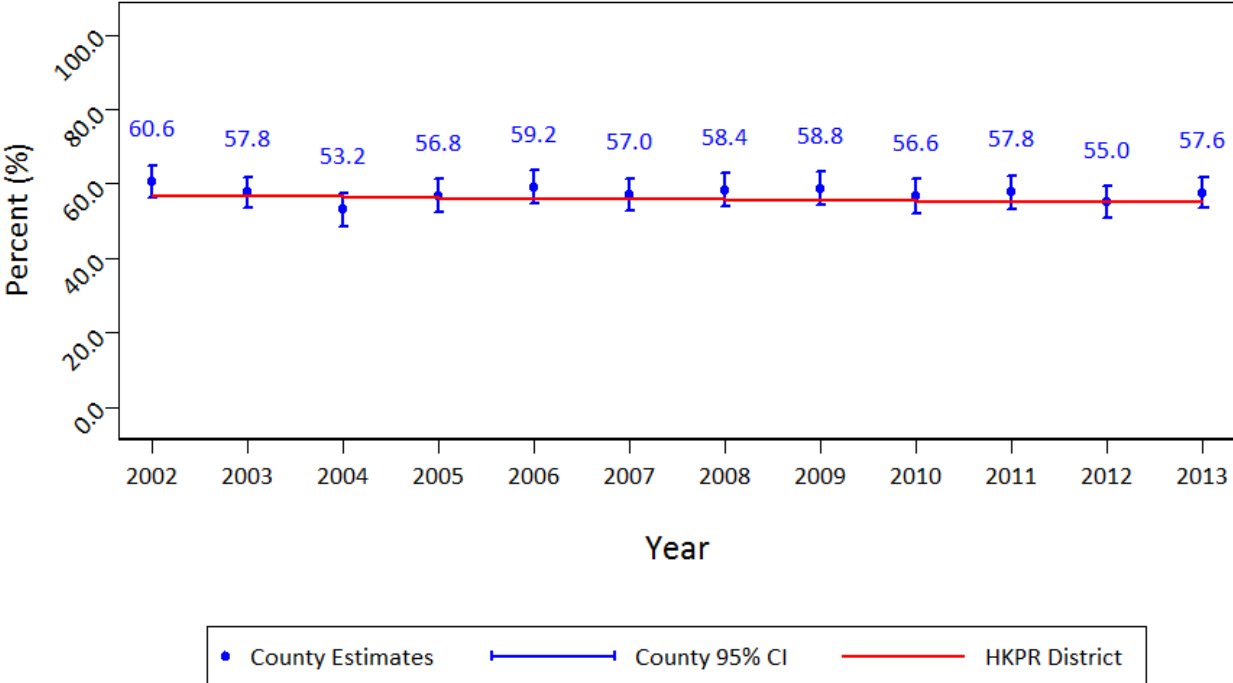
Data Source: RRFSS (Jan-Dec, 2002 - 2013), HKPR District Health Unit and Institute for Social Research (ISR), York University.

Interpretation: Within HKPR, a consistent proportion of female residents have self-reported very-good or excellent general health (~60%). The proportion of males who self-report very-good or excellent general health decreased in 2004 and has fluctuated slightly since. Over the past eleven years, a higher proportion of women within the HKPR District Health Unit have self-reported very-good or excellent general health.

Data Note: Point estimates are marked on the graph with circles and triangles for males and females, respectively. Surrounding each point estimate are 95% Confidence Intervals (95% CIs) which indicate the range of variability for an estimate. There is a 95% probability that the **true** estimate is within this range. The trend lines presented, both males and females, are a smoothed line of best fit through the respective point estimates for the entire time period.

Proportion of adults (18+) who self-report very good or excellent health, Northumberland County, 2002-2013

Percentage of adults (18+) who report their general health is excellent or very good, Northumberland County, 2002 - 2013



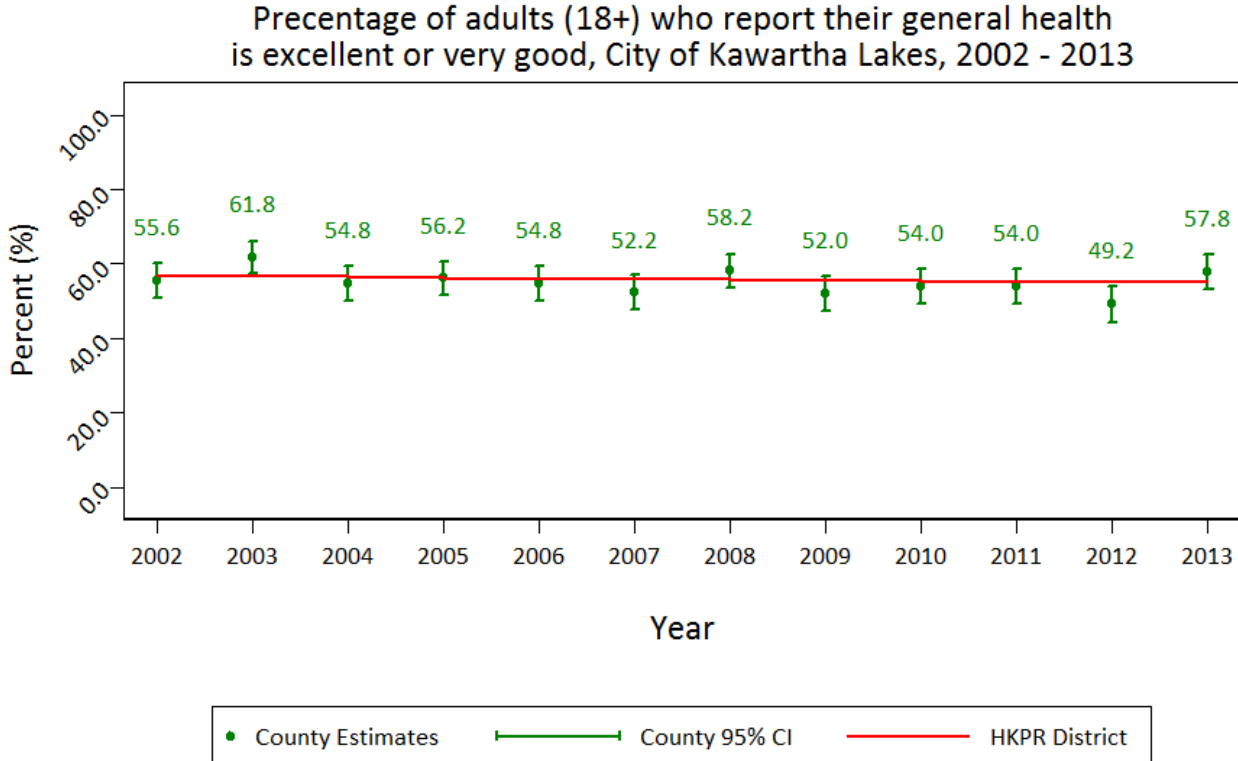
*High Variability; Interpret with caution
 **Data not released
 Note: Trend line is the HKPR District after applying a lowess smoother
 Data Source: RRFSS (Jan-Dec, 2002 - 2013), HKPR District Health Unit and Institute for Social Research (ISR), York University.

Interpretation:

Since 2002, the percentage of residents from Northumberland County who self-report very good or excellent health has moderately fluctuated over the past eleven years, ranging from a high of 60.6 in 2002 to a low of 53.2 in 2004.

Data Note: Point estimates for the county are marked on the graph with circles and are surrounded by 95% CIs which indicate the range of variability for an estimate. The trend line presented is the smoothed line of best fit through the Health Unit’s overall (includes all counties) annual estimate for the entire time period.

Proportion of adults (18+) who self-report very good or excellent health, City of Kawartha Lakes, 2002-2013



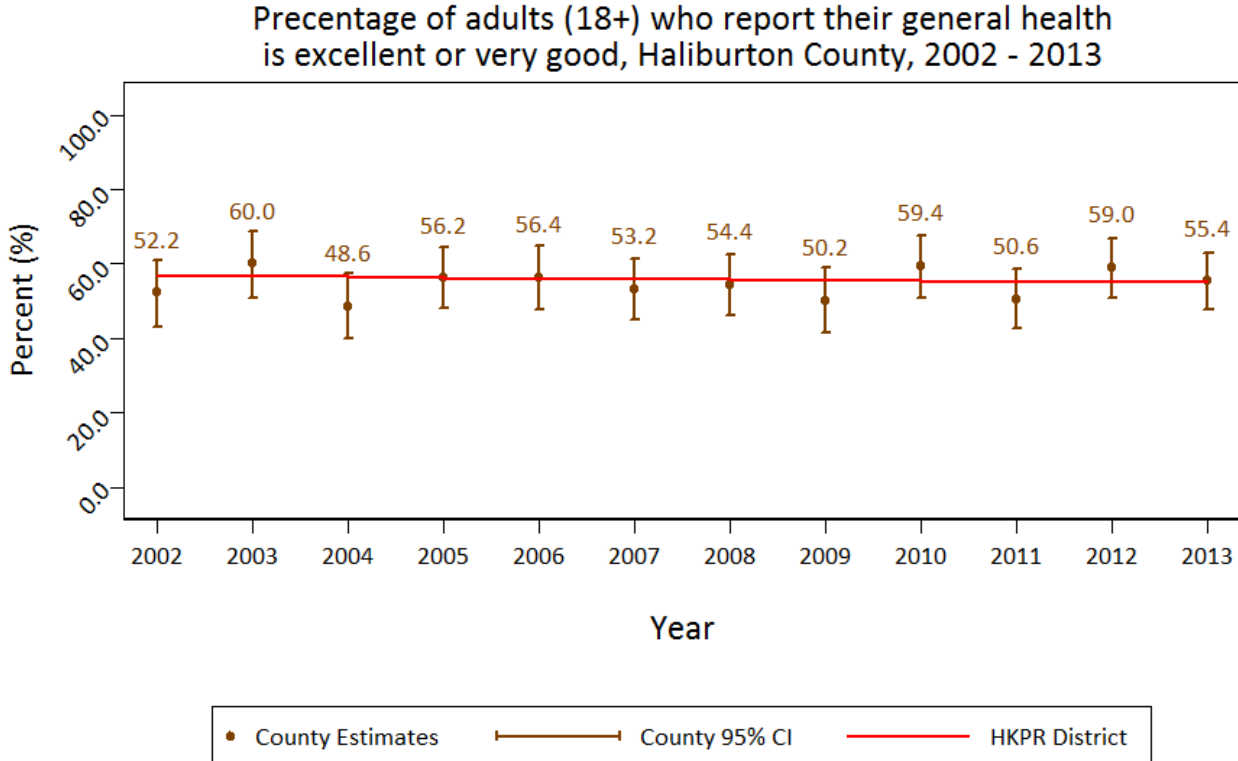
*High Variability; Interpret with caution
 **Data not released
 Note: Trend line is the HKPR District after applying a lowess smoother
 Data Source: RRFSS (Jan-Dec, 2002 - 2013), HKPR District Health Unit and Institute for Social Research (ISR), York University.

Interpretation:

Since 2002, the percentage of residents from City of Kawartha Lakes who self-report very good or excellent health has moderately fluctuated over the past eleven years, ranging from a high of 61.8 in 2003 to a low of 49.2 in 2012.

Data Note: Point estimates for the county are marked on the graph with circles and are surrounded by 95% CIs which indicate the range of variability for an estimate. The trend line presented is the smoothed line of best fit through the Health Unit’s overall (includes all counties) annual estimate for the entire time period.

Proportion of adults (18+) who self-report very good or excellent health, Haliburton County, 2002-2013



*High Variability; Interpret with caution
 **Data not released
 Note: Trend line is the HKPR District after applying a lowess smoother
 Data Source: RRFSS (Jan-Dec, 2002 - 2013), HKPR District Health Unit and Institute for Social Research (ISR), York University.

Interpretation:

Since 2002, the percentage of residents from Haliburton County who self-report very good or excellent health has moderately fluctuated over the past eleven years, ranging from a high of 60.0 in 2003 to a low of 50.2 in 2009.

Data Note: Point estimates for the county are marked on the graph with circles and are surrounded by 95% CIs which indicate the range of variability for an estimate. The trend line presented is the smoothed line of best fit through the Health Unit’s overall (includes all counties) annual estimate for the entire time period.

Data Limitations:

1. Questions are only asked of adult residents aged 18+.
2. The telephone survey is only conducted in English.
3. Results are based on self-reported behaviours.
4. (*) indicates that results are based on small sample size; thus, estimates have high variability.
5. (**) indicates the data is not released due to small sample size.

Data Notes:

1. Source: Rapid Risk Factor Surveillance System (RRFSS), Jan 2002 – Dec 2013, Haliburton, Kawartha, Pine Ridge (HKPR) District Health Unit and Institute for Social Research (ISR), York University.
2. Missing responses are not included in the analysis.
3. 'Do not know' and 'Refused' responses are analyzed according to RRFSS Analysis Guidelines.
4. The 95% confidence limits are the range of variability for a population estimate. There is a 95% probability that the **true** estimate is within that range.
5. Release criteria of the data are according to RRFSS Analysis Guidelines.