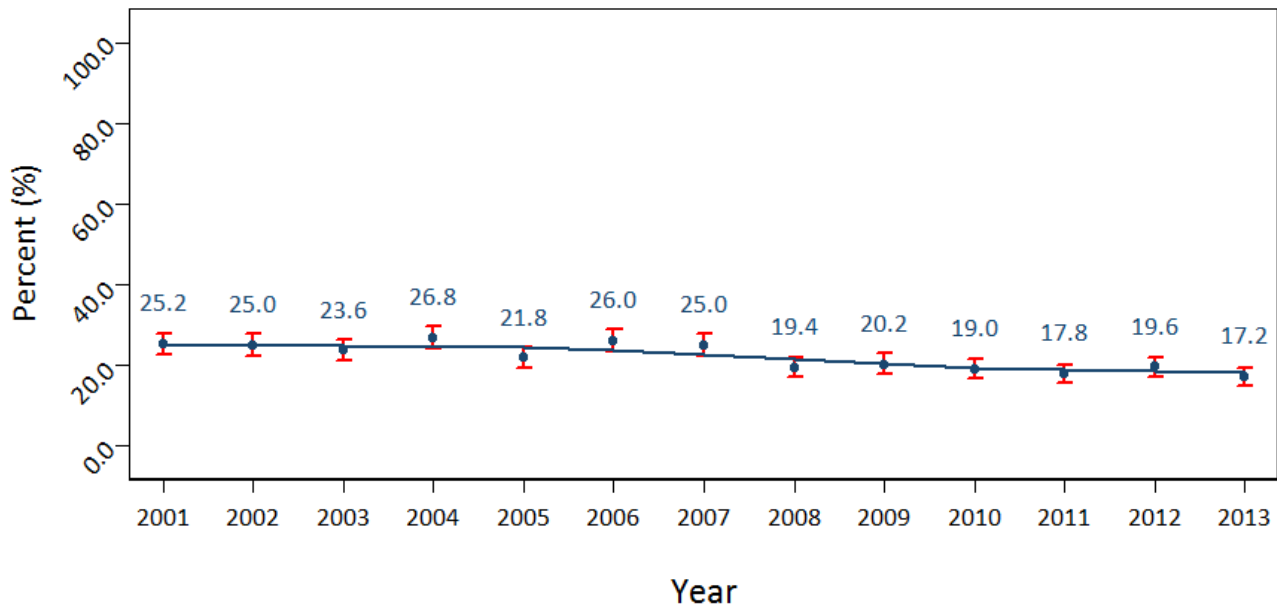




Proportion of adults (18+) who are current smokers.

Percent of adults (18+) who are current smokers, HKPR District, 2001 - 2013



95% Confidence Interval HKPR District trend

*High Variability; Interpret with caution
**Data not released

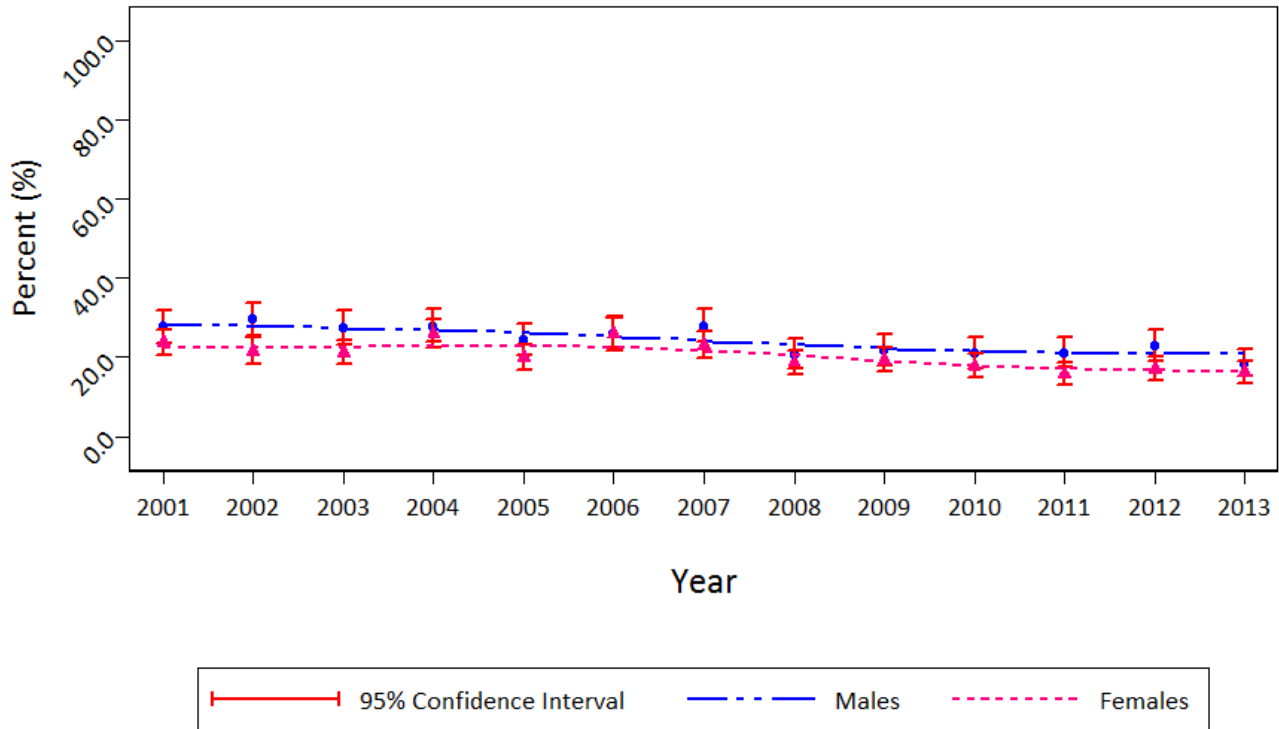
Data Source: RRFSS (Jan-Dec, 2001 - 2013), HKPR District Health Unit and Institute for Social Research (ISR), York University.

Interpretation: Since 2001, the percentage of HKPR residents who are daily or occasional smokers has declined by nearly 10%, with a noticeable slope in the trend occurring between 2006 and 2008. This decline coincides with the implementation of the Smoke-Free Ontario Act, on May 31st 2006.

Data Note: Denominator is all survey respondents including former smokers. Point estimates are marked on the graph with circles and are surrounded by 95% Confidence Intervals (95% CIs) which indicate the range of variability for an estimate. The trend line presented is the smoothed line of best fit through the annual point estimates for the entire time period.

Proportion of adults (18+) who are current smokers, by sex

Percent of adults (18+) who are current smokers, by sex, HKPR District, 2001 - 2013



*High Variability; Interpret with caution
**Data not released

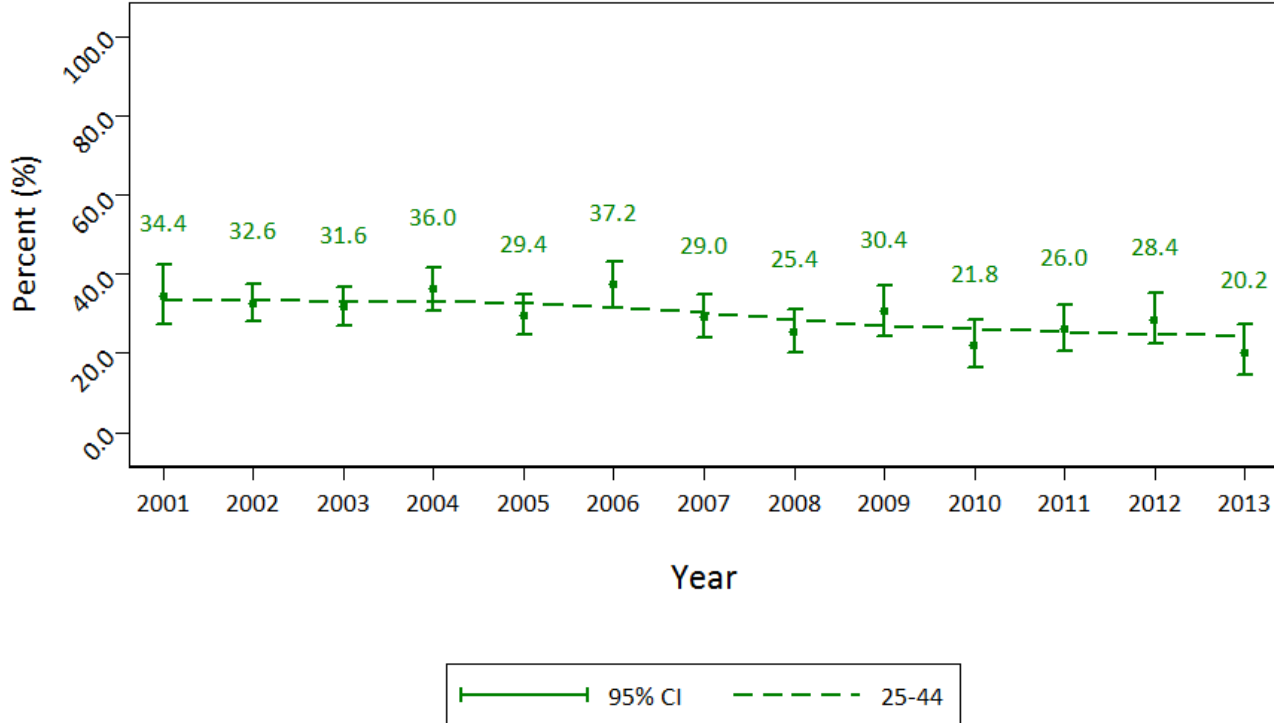
Data Source: RRFSS (Jan-Dec, 2001 - 2013), HKPR District Health Unit and Institute for Social Research (ISR), York University.

Interpretation: Since 2001, the percentage of HKPR residents who are daily or occasional smokers has declined for both males and females. Significant differences were not observed between the percentage current smokers, between males and females.

Data Note: Denominator is all survey respondents including former smokers. Point estimates are marked on the graph with circles and are surrounded by 95% Confidence Intervals (95% CIs) which indicate the range of variability for an estimate. The trend line presented is the smoothed line of best fit through the annual point estimates for the entire time period.

Proportion of adults (25-44) who are current smokers, by age-group, HKPR District, 2001-2013

Percent of adults (25-44) who are current smokers, HKPR District, 2001 - 2013



*High Variability; Interpret with caution
 **Data not released

Data Source: RRFSS (Jan-Dec, 2001 - 2013), HKPR District Health Unit and Institute for Social Research (ISR), York University.

Interpretation:

Since 2001, the percentage of HKPR District residents, aged 25 – 44, who are daily or occasional smokers has ranged from 20.2% to 37.2%. Overall, the proportion of daily or occasional smokers, aged 25 - 44, has decreased by 17% since 2006.

Data Note: Denominator is all survey respondents aged 25-44, including former smokers. Point estimates are marked on the graph with circles and are surrounded by 95% Confidence Intervals (95% CIs) which indicate the range of variability for an estimate. The trend line presented is the smoothed line of best fit through the annual point estimates for the entire time period.

Proportion of adults (45-64) who are current smokers, by age-group, HKPR District, 2001-2013

Percent of adults (45-64) who are current smokers, HKPR District, 2001 - 2013



*High Variability; Interpret with caution
 **Data not released

Data Source: RRFSS (Jan-Dec, 2001 - 2013), HKPR District Health Unit and Institute for Social Research (ISR), York University.

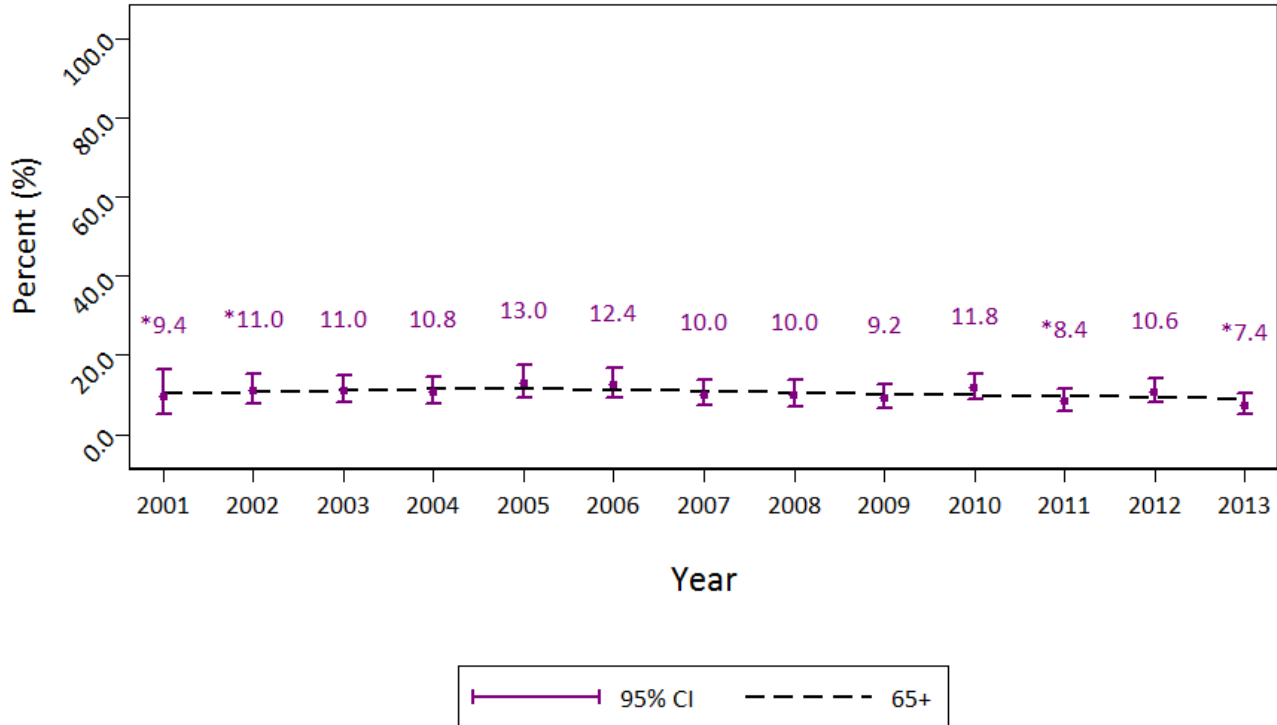
Interpretation:

Since 2001, the percentage of HKPR District residents, aged 45 – 64, who are daily or occasional smokers has ranged from 19.6% to 30.6%. Overall, the proportion of daily or occasional smokers, aged 45 – 64, has been relatively stable — fluctuating between 20% and 22% since 2008.

Data Note: Denominator is all survey respondents aged 45-64, including former smokers. Point estimates are marked on the graph with circles and are surrounded by 95% Confidence Intervals (95% CIs) which indicate the range of variability for an estimate. The trend line presented is the smoothed line of best fit through the annual point estimates for the entire time period.

Proportion of adults (65+) who are current smokers, by age-group, HKPR District, 2001-2013

Percent of adults (65+) who are current smokers, HKPR District, 2001 - 2013



*High Variability; Interpret with caution
 **Data not released

Data Source: RRFSS (Jan-Dec, 2001 - 2013), HKPR District Health Unit and Institute for Social Research (ISR), York University.

Interpretation:

Since 2001, the percentage of HKPR District residents, aged 65+, who are daily or occasional smokers has ranged from 7.4% to 13.0%. Overall, the proportion of daily or occasional smokers, aged 65+, has declined slightly since 2006.

Data Note: Denominator is all survey respondents aged 65+, including former smokers. Point estimates are marked on the graph with circles and are surrounded by 95% Confidence Intervals (95% CIs) which indicate the range of variability for an estimate. The trend line presented is the smoothed line of best fit through the annual point estimates for the entire time period.

Data Limitations:

1. Questions are only asked of adult residents aged 18+.
2. The telephone survey is only conducted in English.
3. Results are based on self-reported behaviours.
4. (*) indicates that results are based on small sample size; thus, estimates have high variability.
5. (**) indicates the data is not released due to small sample size.

Data Notes:

1. Source: Rapid Risk Factor Surveillance System (RRFSS), Jan 2001 – Dec 2013, Haliburton, Kawartha, Pine Ridge (HKPR) District Health Unit and Institute for Social Research (ISR), York University.
2. Missing responses are not included in the analysis.
3. 'Do not know' and 'Refused' responses are analyzed according to RRFSS Analysis Guidelines.
4. The 95% confidence limits are the range of variability for a population estimate. There is a 95% probability that the **true** estimate is within that range.
5. Release criteria of the data are according to RRFSS Analysis Guidelines.