

COVID-19 – Daily Epidemiological Summary, 12 Aug 2020

Table 1. Haliburton, Kawartha, Pine Ridge District Health Unit (HKPRDHU) Situational Assessment†

Measure	Details
Confirmed Cases	No new confirmed cases. Cumulative total of 218 confirmed cases to date; 26 in Northumberland County, 177 in City of Kawartha Lakes, and 15 in Haliburton.
Hospitalizations	No new hospitalized cases. Cumulative hospitalized cases: 14.
Deaths	No new deaths. Cumulative deaths from COVID-19: 32; 28 deaths among residents; 4 deaths in community cases.

†Based on data available as of 4:30 pm, 11 August 2020.

Table 2. COVID-19 Cases, Contacts, Hospitalizations, and Deaths by County, HKPRDHU

	Haliburton	Kawartha Lakes	Northumberland	HKPRDHU
Current Community High-Risk Contacts	10	11	5	26
Current Community Probable Cases	0	1	0	1
Total Confirmed Cases Not Resolved	3	2	0	5
Total Confirmed Cases Resolved	12	156	26	194
Total Confirmed Cases†	15	177	26	218
Total Confirmed Outbreak/Community Cases‡ (outbreak/community)	1 / 14	91 / 86	3 / 23	95 / 123
Total Hospitalizations among Confirmed Cases (outbreak/community)	0 / 1	4 / 7	0 / 2	4 / 10
Total Deaths among Confirmed Cases* (outbreak/community)	0 / 0	15 / 4	0 / 0	15 / 4
Total Deaths among Probable Cases†* (outbreak/community)	0/0	13/0	0/0	13/0

High-Risk Contacts are defined as asymptomatic individuals who are known to have been in contact with a Confirmed or Probable case and do not include outbreak-related cases in Long Term Care Home (LTCH). **Probable Cases** (as of May 25) are individuals who are a symptomatic close contact of a confirmed case and whose lab results are not available (refused testing or not able to get tested) or inconclusive, and do not include outbreak-related cases in LTCH. **Resolved** excludes individuals who died and is defined as cases reported as recovered in iPHIS and cases who are not currently listed as hospitalized in iPHIS, those who are 14 days past symptom onset (if present) or 14 days past the episode date if the case is closed. Resolved is not based on two negative tests for clearance. †Deaths among probable cases are included in cumulative deaths but not included in the confirmed case counts. ‡After migrating COVID-19 data from the integrated Public Health Information System (iPHIS) to the new Public Health Case and Contact Management Solution (CCM), outbreak-related cases among HKPRDHU residents who were a staff or a visitor at a LTCH under outbreak are now reported under outbreak cases, rather than as community cases. *Confirmed deaths includes confirmed cases where COVID-19 is believed to be the cause of death. Note that data in report may differ from previous reports due to routine data cleaning.

Table 3. Total Lab Confirmed COVID-19 Outbreaks to Date, HKPRDHU

Facilities	Ongoing Outbreaks	Total Outbreaks
Hospitals	0	1
Long-term care homes/Retirement homes	0	7
Daycares	0	0
Other community facilities	0	0

Figure 1. Epidemiological Curve of Confirmed COVID-19 Cases, HKPRDHU

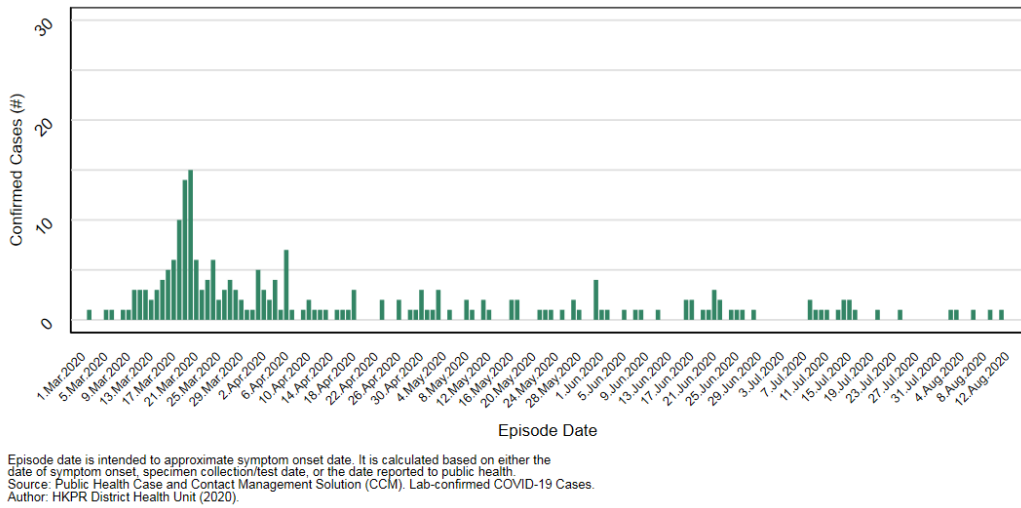


Figure 2. Distribution of Confirmed COVID-19 Cases by Age and Sex, HKPRDHU

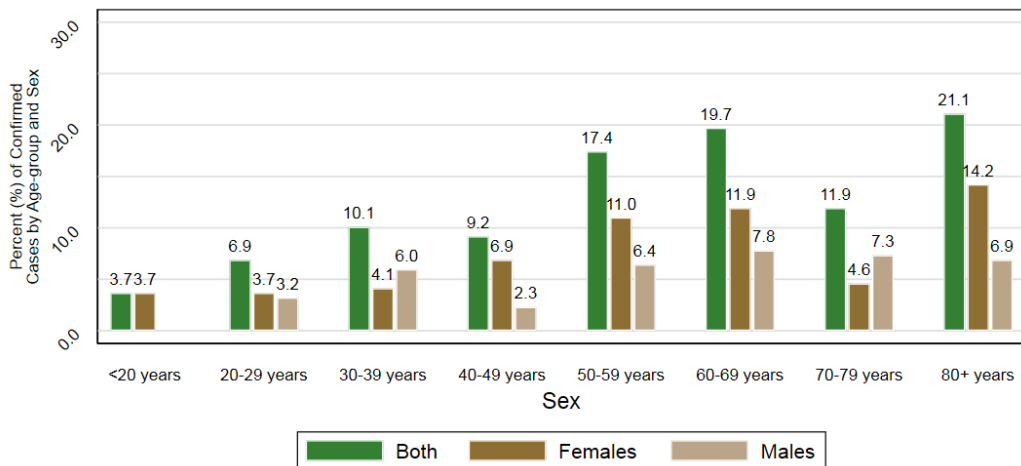
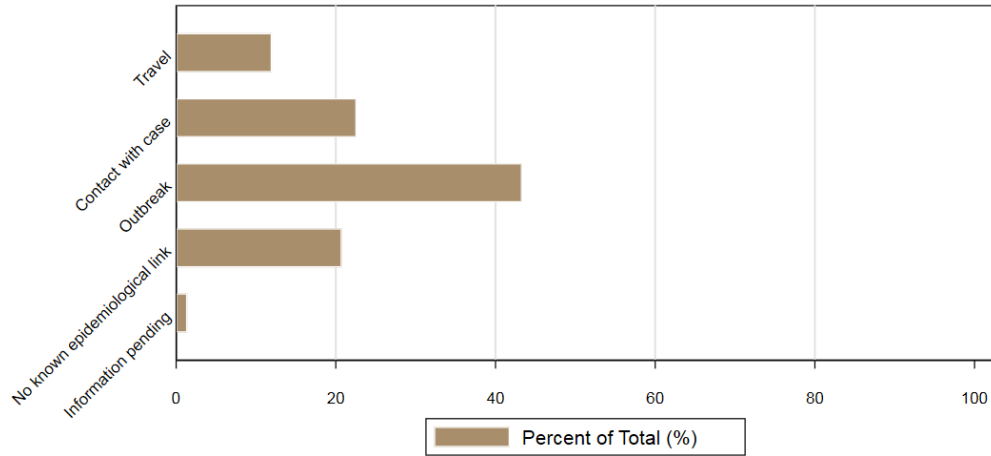


Figure 3. Exposure Setting Among Confirmed COVID-19 Cases, HKPRDHU

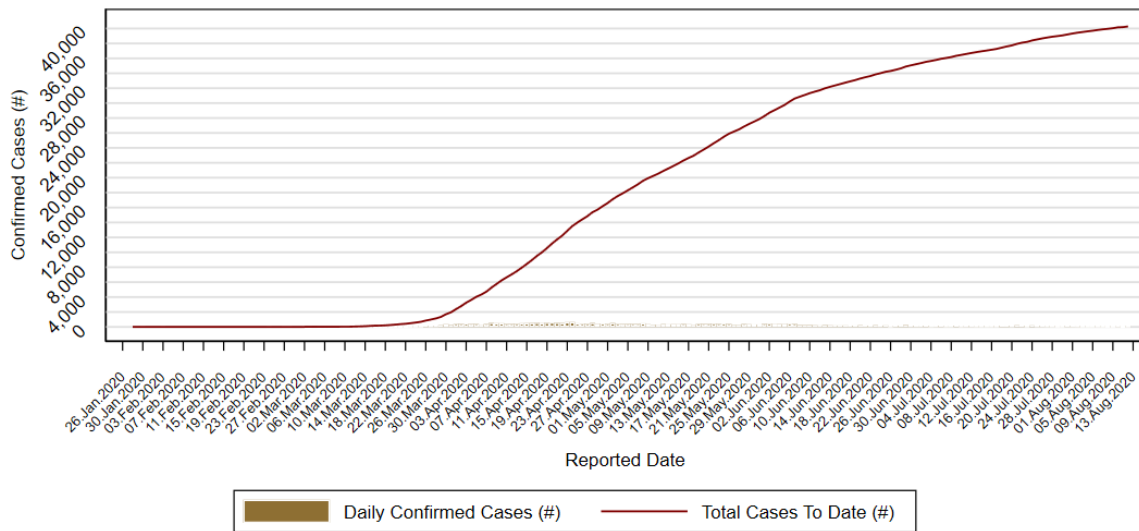


Source: Ontario Ministry of Health. Confirmed positive cases of COVID-19 in Ontario. <https://data.ontario.ca/dataset/confirmed-positive-cases-of-covid-19-in-ontario>
 Author: HKPR District Health Unit (2020).

Note: As of June 17th, the above graph reports outbreak-related cases separately from contact with a confirmed case.

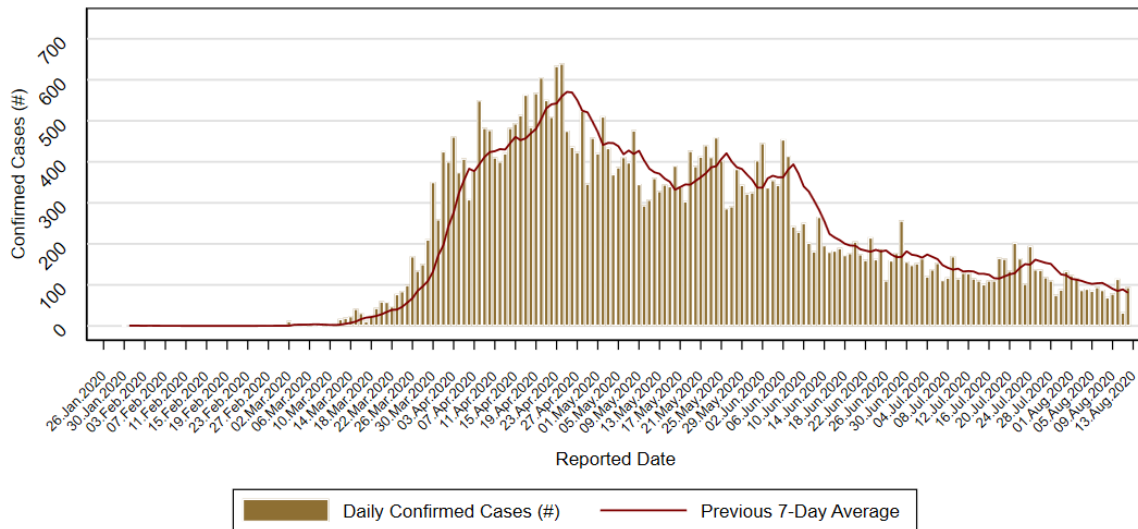
Provincial Update, 12 Aug 2020, 10:30 am

Figure 4. Epidemiological Curve of Confirmed COVID-19 Cases, Ontario



Source: Ontario Ministry of Health.
 Author: HKPR District Health Unit (2020).

Figure 5. Epidemiological Curve of Daily Confirmed COVID-19 Cases, Ontario



Source: Ontario Ministry of Health; Author: HICPR District Health Unit (2020).

Note: The cases reported over the last several days may be under-reported due to lag-time with laboratory testing and reporting.

- A total of 40,289 cases reported in Ontario (95 cases more than that was reported on August 11th, a 0.2% increase).
- 36,590 cases are resolved, and 2,787 deaths have occurred; 22,054 tests currently under investigation; 49 cases currently hospitalized and 20 cases in ICU.
- In Ontario, 46.6% of cases are male, 52.6% are female.
- 33.1% of the cases are 60 years and older.
- A cumulative total of 403 outbreaks reported in long-term care homes, with 1,800 deaths among residents.
- A cumulative total of 4,739 hospitalizations reported to date.

Table 4. Exposure Setting Among Confirmed Cases of COVID-19, Ontario

Exposure Setting	Cases (#)	Percent (%)
Travel	1,999	5.0
Contact with case	12,733	31.6
Outbreak	15,682	38.9
No known epidemiological link	8,481	21.1
Information pending	1,394	3.5

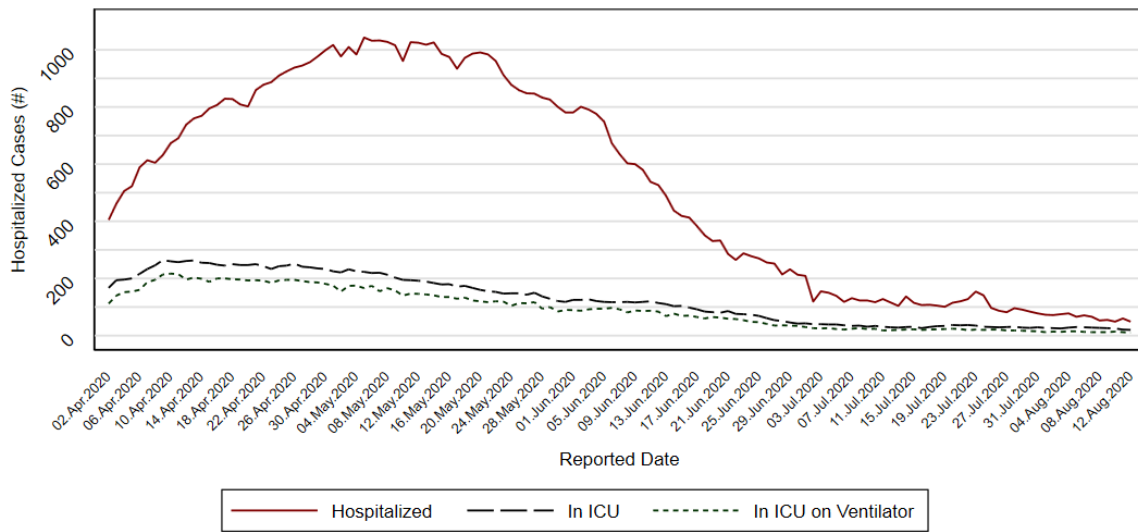
Data source: Ontario Ministry of Health. Confirmed positive cases of COVID-19 in Ontario.

Table 5. Outcome Status Among Confirmed Cases of COVID-19, Ontario

Status	Cases (#)	Percent (%)
Fatal	2,787	6.9
Not Resolved	912	2.3
Resolved	36,590	90.8

Data source: Ontario Ministry of Health. Confirmed positive cases of COVID-19 in Ontario.

Figure 6. Confirmed Cases of COVID-19 Currently Hospitalized, in ICU, and in ICU on a Ventilator, Ontario



Source: Ontario Ministry of Health.
 Author: HICPR District Health Unit (2020).

National Update, 11 Aug 2020, 19:00

Table 6. Confirmed Cases of COVID-19, by Province/Territory, Canada

Province/Territory	Confirmed Cases (#)	Confirmed Deaths (#)
British Columbia	4,111	195
Alberta	11,772	216
Saskatchewan	1,479	20
Manitoba	547	8
Ontario	40,194	2,786
Quebec	60,718	5,697
Newfoundland and Labrador	268	3
New Brunswick	177	2
Nova Scotia	1,071	64
Prince Edward Island	36	0
Yukon	15	0
Northwest Territories	5	0
Nunavut	0	0
Repatriated travellers	13	0
Canada	120,406	8,991

Data source: Public Health Agency of Canada - Coronavirus disease (COVID-19): Outbreak update. Note: There is a delay between reporting by provinces and so this data may not be up to date. Confirmed cases only.

Table 7. Percent of confirmed cases of COVID-19 reported by exposure setting, Canada

Exposure Setting	Percent (%)
Close contact with a case	54.8
Contact with a traveller	0.8
Travelled outside of Canada	4.1
Unknown source	35.1
Pending information	5.1

Data source: Public Health Agency of Canada - Coronavirus disease (COVID-19): Outbreak update.

Table 8. Confirmed Cases of COVID-19 Reported by Age-Group, Canada

Age-Group	Cases (#)	Percent (%)
≤ 19	9,597	8.2
20-29	17,942	15.2
30-39	16,902	14.4
40-49	17,634	15.0
50-59	17,475	14.8
60-69	11,302	9.6
70-79	8,252	7.0
80+	18,585	15.8

Data source: Public Health Agency of Canada - Coronavirus disease (COVID-19): Outbreak update.

Table 9. Global Confirmed Cases of COVID-19 and Top 10 Affected Countries

Rank	Country	Confirmed Cases (#)	Deaths (#)	Fatality Rate (%)
	Global Counts	20,284,882	741,126	3.7
1	US	5,141,208	164,537	3.2
2	Brazil	3,057,470	101,752	3.3
3	India	2,329,638	46,091	2.0
4	Russia	895,691	15,103	1.7
5	South Africa	566,109	10,751	1.9
6	Mexico	492,522	53,929	10.9
7	Peru	483,133	21,276	4.4
8	Colombia	410,453	13,475	3.3
9	Chile	376,616	10,178	2.7
10	Iran	331,189	18,800	5.7

Data source: Johns Hopkins Center for Systems Science and Engineering (2020).

Data Sources

[Integrated Public Health Information System \(iPHIS\), Haliburton, Kawartha, Pine Ridge District Health Unit](#)

[Ontario Ministry of Health](#)

[Public Health Agency of Canada - Coronavirus disease \(COVID-19\): Outbreak update](#)

[John Hopkins University - Interactive Coronavirus Dashboard](#)