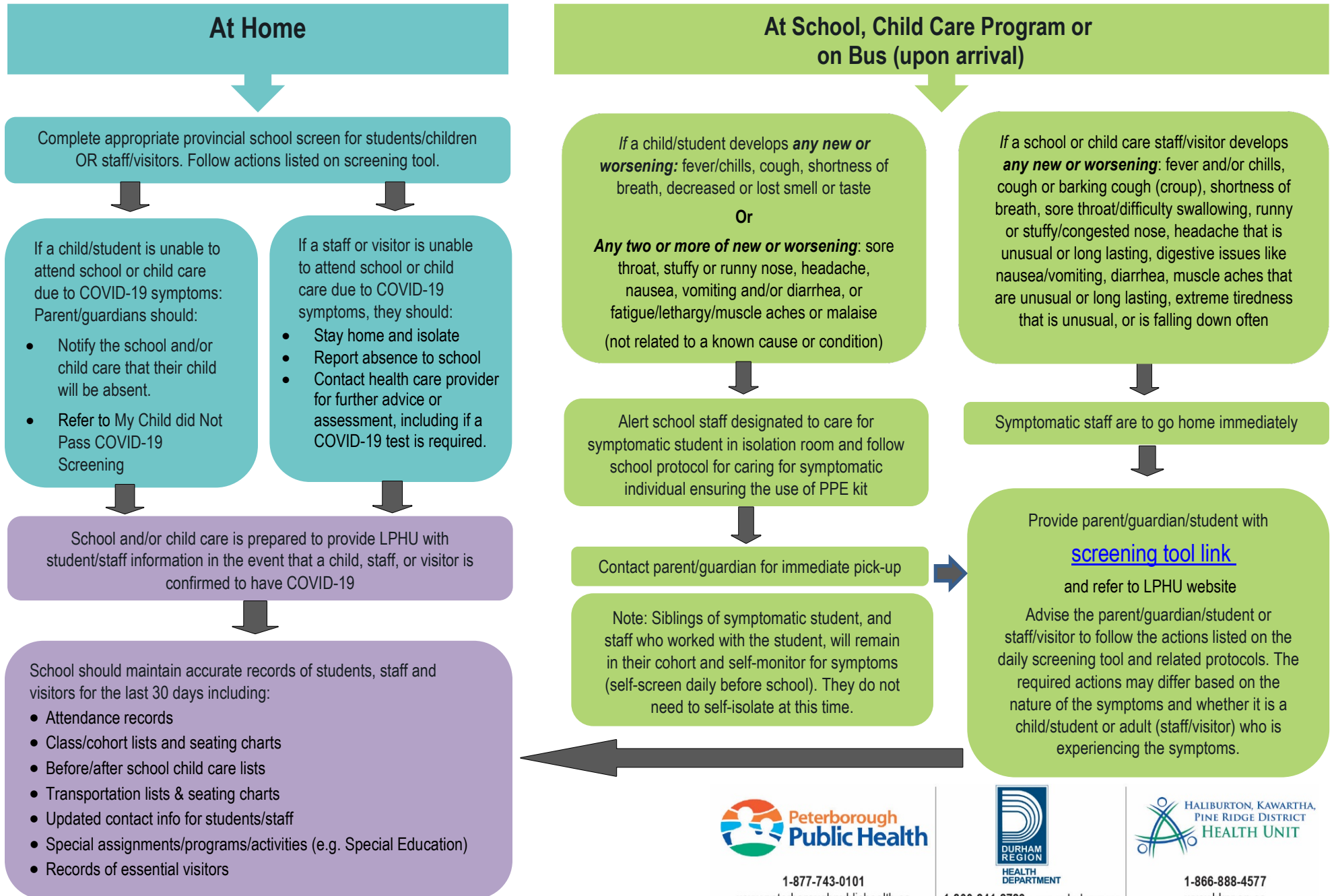


COVID-19 Protocol for Individual with Symptoms

This protocol should be followed when a child/student, staff or visitor develops symptoms of COVID-19.

Last Revised: October 16, 2020



1-877-743-0101
www.peterboroughpublichealth.ca



1-800-841-2729 • www.durham.ca



1-866-888-4577
www.hkpr.on.ca

Caring for a Symptomatic Individual at School / Child Care

- Alert school and/or child care staff designated to care for symptomatic students.
- Student is brought to the isolation room.
- If physical distancing cannot be maintained, staff caring for student uses PPE kit (gloves, masks, face shields and gown) to be put on before entering the room with the student.
- Student to wear medical mask as tolerated.
- Staff supervise student while maintaining physical distance, when possible.
- Follow school and/or child care protocol for PPE, cleaning and isolation room requirements.

Communication Regarding Next Steps

- Provide individual with appropriate information (e.g. appropriate student and/or staff/visitor screening tool and related protocols) and refer to Local Public Health Unit (LPHU) website for more information.
- Advise the individual to follow the actions listed on the daily screening tool and related protocols. The required actions may differ based on the nature of the symptoms and whether it is a child/student or adult (staff/visitor) who is experiencing the symptoms.
- Encourage the individual to share the results with the school and/or child care centre as soon as possible.
- Thank the individual for taking the necessary steps to protect the school and larger community – we are all doing our part!

Communication Regarding Return to School or Child Care

The protocols for return to school and child care differ for children (i.e. students) and adults (i.e. staff and visitors). Please refer to the following LPHU resources for more information:

- My Child did not pass the COVID-19 daily screening. Now what? (includes: When can my child return to school or child care?)
- COVID-19 Return to School or Child care: Protocol for Employees/Visitors

Encouraging Follow through on Recommended Actions

We understand that it may be challenging for schools and child care centres to monitor and enforce the actions listed in the LPHU Screening Tools for students and/or staff/visitors, and in the return to school protocols for school and child care settings.

Medical documentation is not required to return to school and/or child care centres.

Last Revised: October 16, 2020



1-877-743-0101

www.peterboroughpublichealth.ca



1-800-841-2729 • www.durham.ca



1-866-888-4577

www.hkpr.on.ca