

COVID-19 – Daily Epidemiological Summary, 16 Sep 2020

Table 1. Haliburton, Kawartha, Pine Ridge District Health Unit (HKPRDHU) Situational Assessment†

Measure	Details
Confirmed Cases	Three new confirmed cases. Cumulative total of 233 confirmed cases to date; 40 in Northumberland County, 178* in City of Kawartha Lakes, and 15 in Haliburton.
Hospitalizations	No new hospitalized cases. Cumulative hospitalized cases: 15.
Deaths‡	No new deaths. Cumulative deaths from COVID-19: 20; 17 deaths among residents; 3 deaths in community cases.

†Based on data available as of 4:30 pm, 15 Sep 2020. *One previously reported case has been removed as a duplicate reported by another PHU.

Table 2. COVID-19 Cases, Contacts, Hospitalizations, and Deaths by County, HKPRDHU

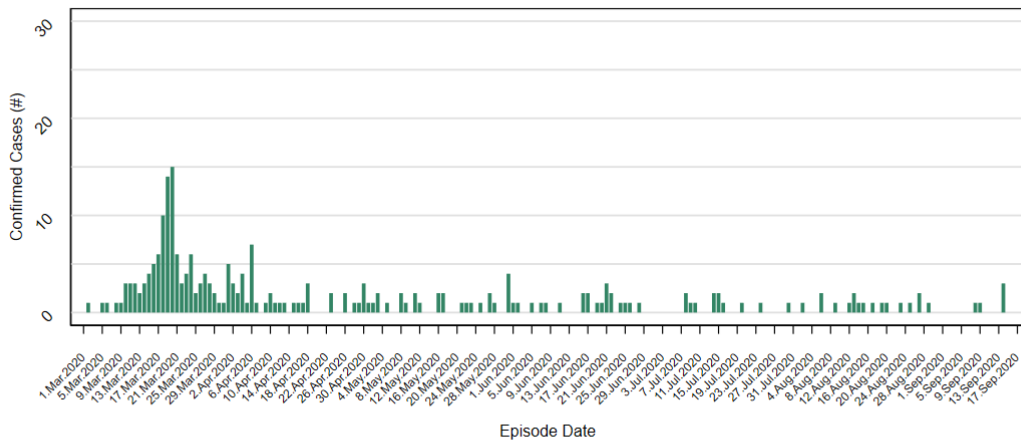
	Haliburton	Kawartha Lakes	Northumberland	HKPRDHU
Current Community High-Risk Contacts	0	1	5	6
Current Community Probable Cases	0	0	0	0
Confirmed Cases Not Resolved	0	0	5	5
Confirmed Cases Resolved	15	159*	34	208
Total Confirmed Cases†	15	178*	40	233
Total Confirmed Outbreak/Community Cases	1 / 14	91 / 87	4 / 36	96 / 137
Total Confirmed Hospitalizations (outbreak/community)	0 / 1	4 / 7	1 / 2	5 / 10
Deaths‡ among Confirmed Cases (outbreak/community)	0 / 0	16 / 3	1 / 0	17 / 3
Total Deaths among Probable Cases† (outbreak/community)	0 / 0	13 / 0	0 / 0	13 / 0

High-Risk Contacts are defined as asymptomatic individuals who are known to have been in contact with a Confirmed or Probable case and do not include outbreak-related cases in Long Term Care Home (LTCH). **Probable Cases** (as of May 25) are individuals who are a symptomatic close contact of a confirmed case and whose lab results are not available (refused testing or not able to get tested) or inconclusive, and do not include outbreak-related cases in LTCH. **Resolved** excludes individuals who died and is defined as cases reported as recovered in iPHIS and cases who are not currently listed as hospitalized in iPHIS, those who are 14 days past symptom onset (if present) or 14 days past the episode date if the case is closed. Resolved is not based on two negative tests for clearance. †Deaths among probable cases are included in cumulative deaths but not included in the confirmed case counts. Confirmed deaths includes confirmed cases where COVID-19 is believed to be the cause of death. *Note that data in report may differ from previous reports due to routine data cleaning.

Table 3. Total Lab Confirmed COVID-19 Outbreaks to Date, HKPRDHU

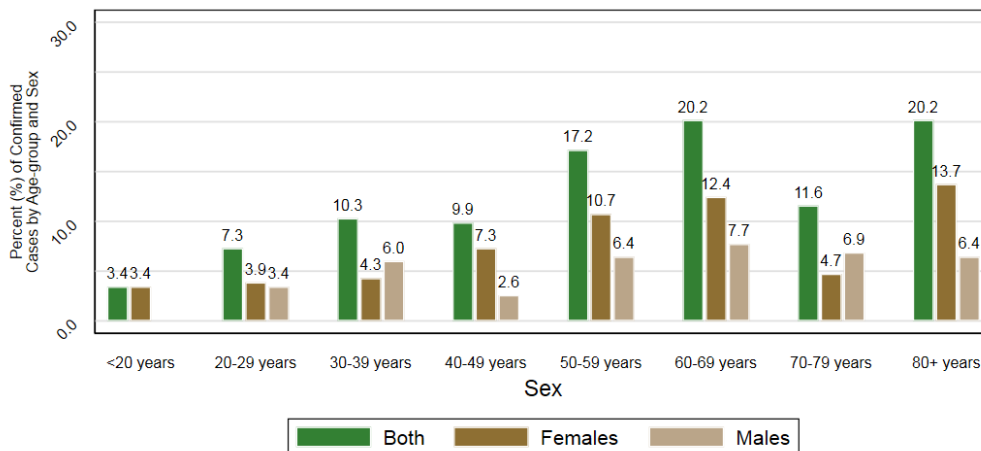
Facilities	Ongoing Outbreaks	Total Outbreaks
Hospitals	0	1
Long-term care homes/Retirement homes	0	8
Daycares	0	0
Schools	0	0
Other community facilities	0	0

Figure 1. Epidemiological Curve of Confirmed COVID-19 Cases, HKPRDHU



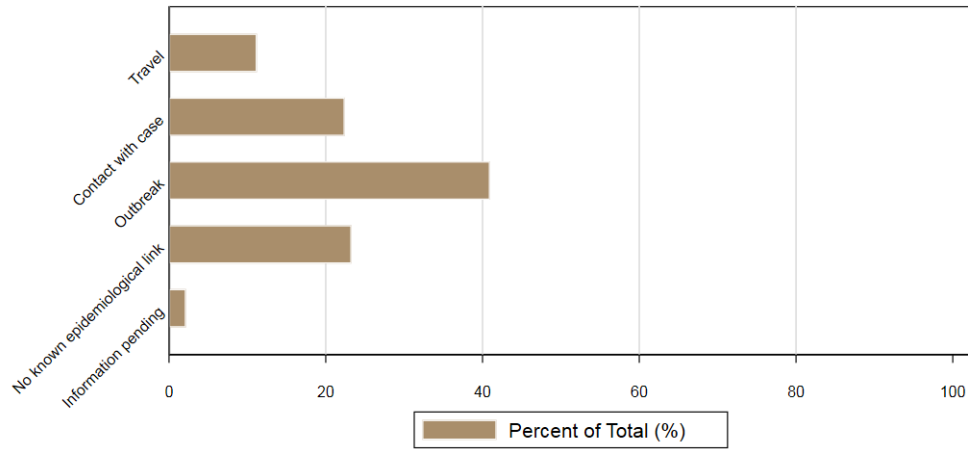
Episode date is intended to approximate symptom onset date. It is calculated based on either the date of symptom onset, specimen collection/test date, or the date reported to public health.
 Source: Integrated Public Health Information System (IPHIS). Lab-confirmed COVID-19 Cases.
 Author: HKPR District Health Unit (2020).

Figure 2. Distribution of Confirmed COVID-19 Cases by Age and Sex, HKPRDHU



Source: Public Health Case and Contact Management Solution (CCM). Lab-confirmed COVID-19 Cases.
 Author: HKPR District Health Unit (2020).

Figure 3. Exposure Setting Among Confirmed COVID-19 Cases, HKPRDHU

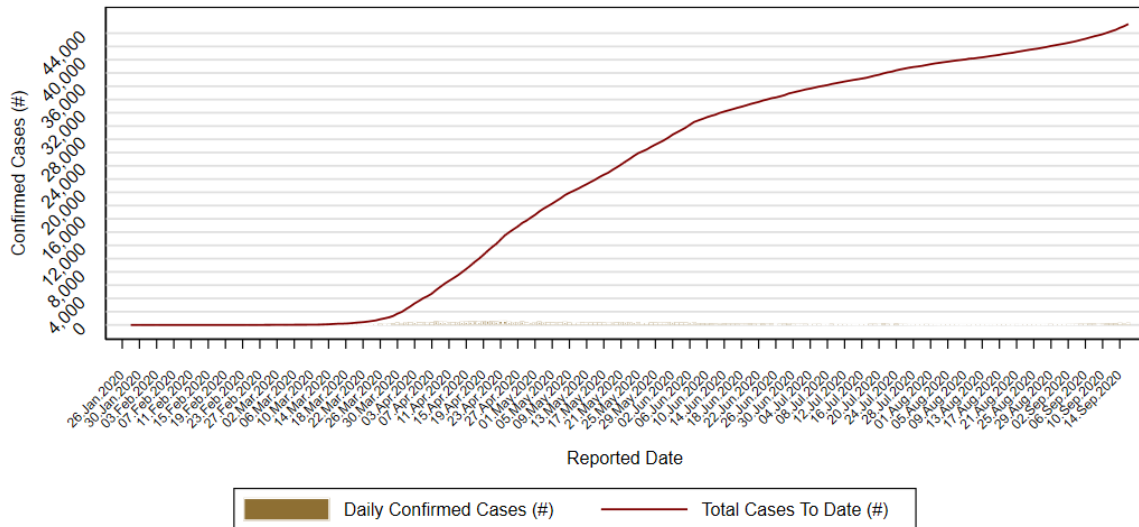


Source: Ontario Ministry of Health. Confirmed positive cases of COVID-19 in Ontario. <https://data.ontario.ca/dataset/confirmed-positive-cases-of-covid-19-in-ontario>
 Author: HKPR District Health Unit (2020).

Note: As of June 17th, the above graph reports outbreak-related cases separately from contact with a confirmed case.

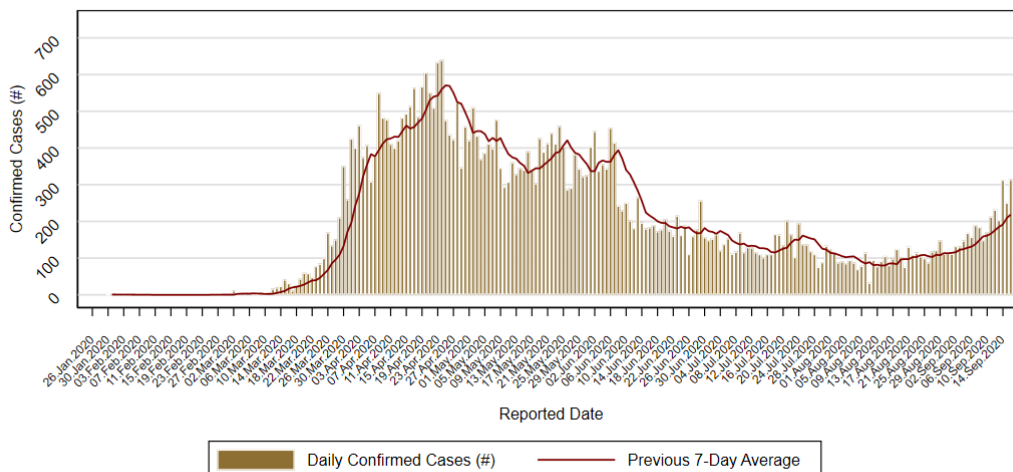
Provincial Update, 16 Sep 2020, 10:30 am

Figure 4. Epidemiological Curve of Confirmed COVID-19 Cases, Ontario



Source: Ontario Ministry of Health.
 Author: HKPR District Health Unit (2020).

Figure 5. Epidemiological Curve of Daily Confirmed COVID-19 Cases, Ontario



Source: Ontario Ministry of Health.
Author: HKPR District Health Unit (2020).

Note: The cases reported over the last several days may be under-reported due to lag-time with laboratory testing and reporting.

- A total of 45,383 cases reported in Ontario (315 cases more than that was reported on September 15th, a 0.7% increase).
- 40,091 cases are resolved, and 2,820 deaths have occurred; 28,346 tests currently under investigation; 44 cases currently hospitalized and 20 cases in ICU.
- In Ontario, 47.0% of cases are male, 52.2% are female.
- 32.5% of cases are 20 – 39 years old, 30.9% of the cases are 60 years and older.
- A cumulative total of 41 cases reported in schools (includes both student and staff).
- A cumulative total of 52 cases reported in child-care centres (includes both children and staff).
- A cumulative total of 446 outbreaks reported in long-term care homes, with 1,824 deaths among residents.
- A cumulative total of 4,977 hospitalizations reported to date.

Table 4. Exposure Setting Among Confirmed Cases of COVID-19, Ontario

Exposure Setting	Cases (#)	Percent (%)
Travel	2,141	4.7
Contact with case	14,728	32.5
Outbreak	16,495	36.3
No known epidemiological link	10,371	22.9
Information pending	1,648	3.6

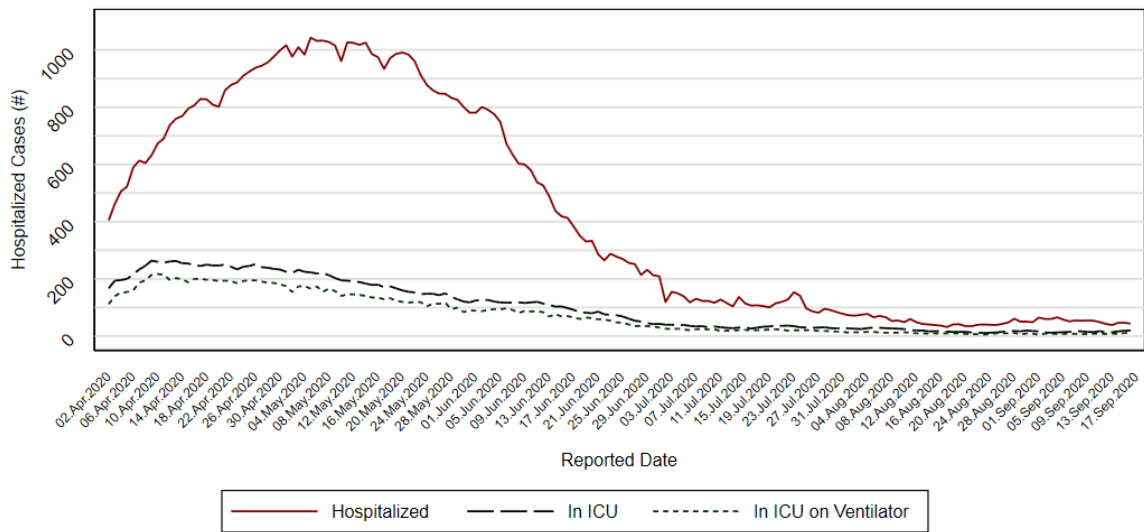
Data source: Ontario Ministry of Health. Confirmed positive cases of COVID-19 in Ontario.

Table 5. Outcome Status Among Confirmed Cases of COVID-19, Ontario

Status	Cases (#)	Percent (%)
Fatal	2,822	6.2
Not Resolved	2,316	5.1
Resolved	40,245	88.7

Data source: Ontario Ministry of Health. Confirmed positive cases of COVID-19 in Ontario.

Figure 6. Confirmed Cases of COVID-19 Currently Hospitalized, in ICU, and in ICU on a Ventilator, Ontario



Source: Ontario Ministry of Health.
Author: MRCB District Health Unit (2020).

National Update, 15 Sep 2020, 19:00

Table 6. Confirmed Cases of COVID-19, by Province/Territory, Canada

Province/Territory	Confirmed Cases (#)	Confirmed Deaths (#)
British Columbia	7,376	219
Alberta	15,957	254
Saskatchewan	1,741	24
Manitoba	1,466	16
Ontario	45,068	2,820
Quebec	65,554	5,785
Newfoundland and Labrador	271	3
New Brunswick	194	2
Nova Scotia	1,086	65
Prince Edward Island	57	0
Yukon	15	0
Northwest Territories	5	0
Nunavut	0	0
Repatriated travellers	13	0
Canada	138,803	9,188

Data source: Public Health Agency of Canada - Coronavirus disease (COVID-19): Outbreak update. Note: There is a delay between reporting by provinces and so this data may not be up to date. Confirmed cases only.

Table 7. Percent of confirmed cases of COVID-19 reported by exposure setting, Canada

	Percent (%)
Close contact with a case	60.4
Contact with a traveller	1.0
Travelled outside of Canada	4.0
Unknown source	33.8
Pending information	0.8

Data source: Public Health Agency of Canada - Coronavirus disease (COVID-19): Outbreak update.

Table 8. Confirmed Cases of COVID-19 Reported by Age-Group, Canada

Age-Group	Cases (#)	Percent (%)
≤ 19	11,801	9.0
20-29	21,246	16.3
30-39	19,434	14.9
40-49	19,427	14.9
50-59	18,852	14.4
60-69	12,210	9.4
70-79	8,729	6.7
80+	18,867	14.5

Data source: Public Health Agency of Canada - Coronavirus disease (COVID-19): Outbreak update.

Table 9. Global Confirmed Cases of COVID-19 and Top 10 Affected Countries

Rank	Country	Confirmed Cases (#)	Deaths (#)	Fatality Rate (%)
	Global Counts	29,571,333	934,986	3.2
1	US	6,605,733	195,915	3.0
2	India	5,020,359	82,066	1.6
3	Brazil	4,382,263	133,119	3.0
4	Russia	1,069,873	18,723	1.8
5	Peru	733,860	30,812	4.2
6	Colombia	728,590	23,288	3.2
7	Mexico	676,487	71,678	10.6
8	South Africa	651,521	15,641	2.4
9	Spain	603,167	30,004	5.0
10	Argentina	577,338	11,852	2.1

Data source: Johns Hopkins Center for Systems Science and Engineering (2020).

Data Sources

Public Health Case and Contact Management Solution (CCM) & Integrated Public Health Information System (iPHIS), Haliburton, Kawartha, Pine Ridge District Health Unit

[Ontario Ministry of Health – How Ontario is responding to COVID-19](#)

[Ontario Ministry of Health – COVID-19 cases in schools and child care centres](#)

[Public Health Agency of Canada - Coronavirus disease \(COVID-19\): Outbreak update](#)

[John Hopkins University - Interactive Coronavirus Dashboard](#)