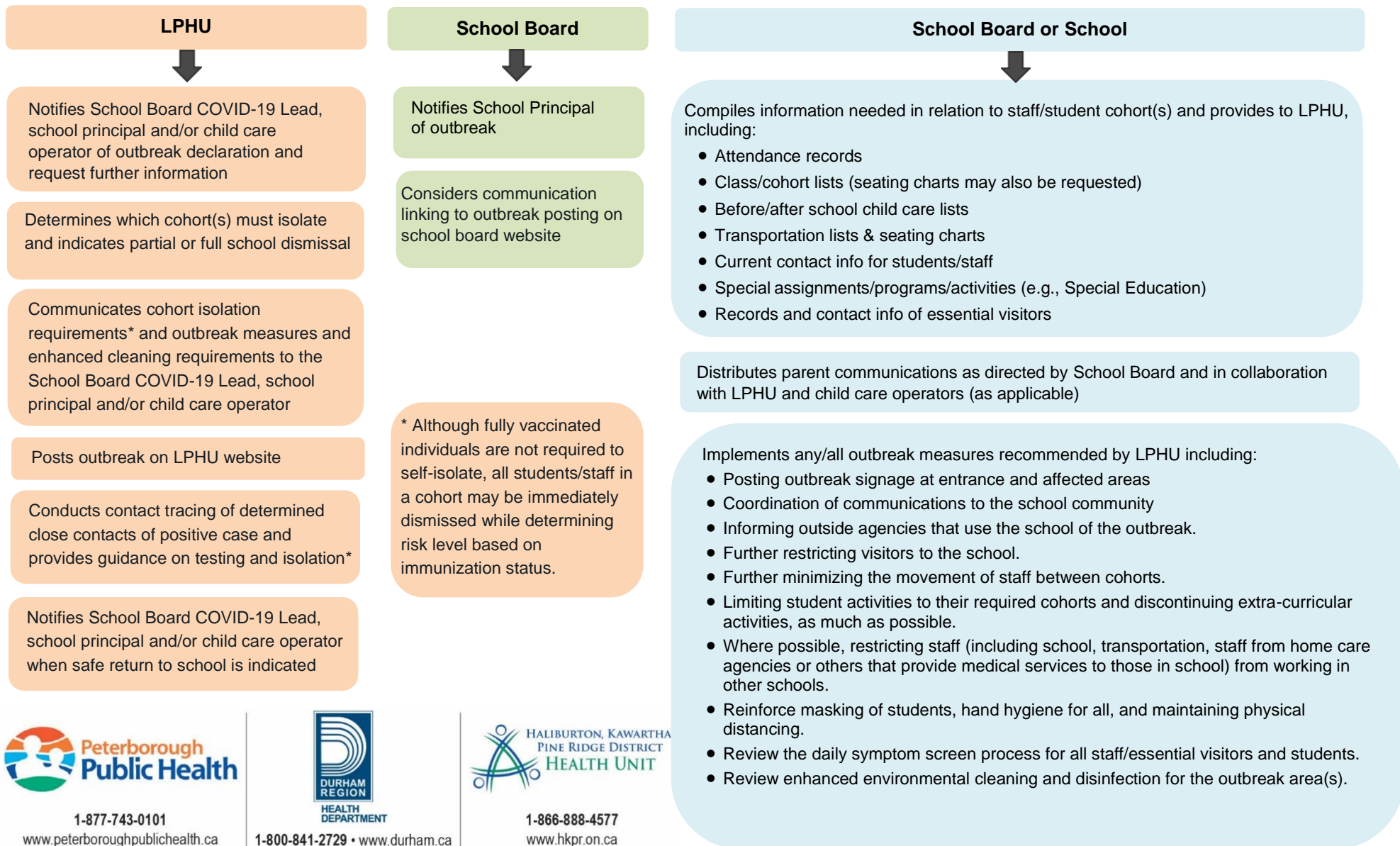


School Protocol When COVID-19 Outbreak is Declared Last revised: Sept 1, 2021

***Note: The following process is intended as a general guide and may be adapted based on the circumstances under which the outbreak is declared.**

Local Public Health Unit (LPHU) determines two or more lab-confirmed COVID-19 cases in students/staff/visitors in a school with an epidemiological link within a 14-day period where at least one case could have reasonably acquired their infection in the school (including transportation and before and after school care), or as determined by public health.

LPHU declares a COVID-19 Outbreak



1-877-743-0101

www.peterboroughpublichealth.ca



1-800-841-2729 • www.durham.ca



1-866-888-4577

www.hkpr.on.ca